

Newsletter of the
Birkbeck Department of
Psychological Sciences



MAIN EVENTS

In This Issue

Main Events 1
and media

Grants, Awards,
& Recognition

Theses
examined /
awarded

Research
highlights /
Impact

Publications

Upcoming talks/
colloquia

Social news

Birkbeck's Dept of Psychological Sciences ranked in the top five **IN THE WORLD!**



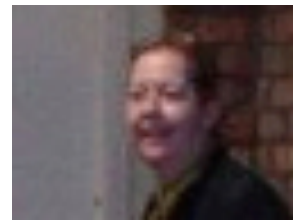
within the annual ranking of

'Psychiatry/Psychology' category of the *Best Global Universities Ranking*. Comprising the total number of citations per research paper, NCI (Normalized Citation Impact) represents the overall impact of a university's research and is independent of the institution's size or age. Head of Dept, Prof. Mike **Oaksford**, said: *"It is an amazing achievement for a small University of London College to be ranked fifth in the world (alongside MIT, Princeton, Stanford and Kings College London, and well ahead of other large UK universities) for such an important and influential index of research quality. Together with our excellent fifth place in the recent UK REF2014 together with the Psychology, Psychiatry & Neuroscience research for which we achieved 100% - the highest rating for impact. I'm immensely proud of the hard work and dedication of all our staff who contributed to these outstanding results."*

CONGRATULATIONS TO SIX MEMBERS OF STAFF

Promotions to Reader

Anne Miles Fiona Tasker Tim Smith & Alex Shepherd



Promotions to Senior Lecturer

Emma Meaburn & Clare Press



MAIN EVENTS & MEDIA



On Monday 21 March 2016

Sci/Film screened *The Eighth Day* in celebration of **World Down Syndrome Day**. After the movie, Dr. Teea **Gliga** and Prof. Annette **Karmiloff-Smith** discussed the portrayal of Down syndrome in the movie as well as the research Annette carries out as part of LonDownS. The audience (of researchers, parents and students) greatly enjoyed the movie (sobbing was heard...)

Listen to the discussion here

<https://www.facebook.com/BIMI01SciFilmSeries/?fref=ts>

Organized by **Birkbeck Institute for the Moving Image & London Down Syndrome Consortium**
(next Sci/Film screening: *The Prestige & the science of magic*, 10th of June 2016)

Michael **Thomas** acted as a scientific consultant for a theatre production entitled 'We're Stuck', which had a run at Shoreditch Town Hall in March. The play, directed by Sarah Punshon, is part-funded by a Wellcome Trust Arts award, and is 'a brand new show for 8-11 year olds, inspired by the extraordinary abilities and limitations of our brains when it comes to maths'. There are, in addition, some robots that might be seeking to take over the world... Along with Prof. Emily Farran at the UCL Institute of Education, he provided Q&A sessions for the audience after performances to talk about the science behind the play.

Tim **Smith**'s paper on film comprehension will be featured on the US WAMC radio program *The Academic Minute* and the website InsideHigherEd.com: <https://www.insidehighered.com/academic-minute>

THESIERS EXAMINED/AWARDED

Livia Freier was awarded her PhD for a thesis entitled: *The development of bottom-up and top-down interaction in the planning of goal-directed action* supervised by Denis Mareschal and Richard Cooper.

Phd Awarded. Roni Mermelshtine. *The relevance of maternal scaffolding behaviours in infancy to child cognitive abilities and academic achievement: A bioecological study*
Examiners: Prof Claire Hughes University of Cambridge, Prof Eirini Flouri UCL IOE.
Supervisors: Jacqueline Barnes, Ted Melhuish.

Chris Brand was awarded his PhD entitled *The effect of probability anchors on moral decision making* Examiners: David Lagnado (UCL) and Shira Eqayam (de Monfort)

Jacqueline Barnes examined PhD examined the thesis of Lesley Jones entitled: *Investigating educators' perspectives of their capacity to teach towards social competence in young children* Australian Catholic University, Sydney, NSW, Australia.

Michael Thomas is to examine a thesis by Julia Ouzia entitled *Beyond the bilingual executive control advantage: A multi-dimensional investigation*, at Anglia Ruskin University.

Tim Smith examined the successful PhD thesis of Christian Valuch at the University of Vienna.

GRANTS, AWARDS & RECOGNITION

Marie **Smith** (PI), Annette **Karmiloff-Smith** (co-PI), and Emily Farran (IoE, co-PI) were awarded a Leverhulme Trust grant for *The Social side of face perception: insights from atypical development*. £177,298. October 2016-October 2019.

Denis **Mareschal** was elected to the Executive Committee of the International Congress on Infant Studies for a 6-year term.

Clare **Press** was awarded a Leverhulme Project Grant, entitled: *The paradoxical influences of prediction on perception: Do actions silence perception?* Amount: £205,756.
PI: Clare Press, Co-I: Floris de Lange, Donders Institute in Nijmegen.

Teea **Gliga** received the BPS Neil O'Connor award for her article with Bedford, R., Charman, T., Johnson, M., & BASIS Team. (2015) (2015). Enhanced visual search in infancy predicts emerging autism symptoms. *Current Biology*, 25(13), 1727-1730.

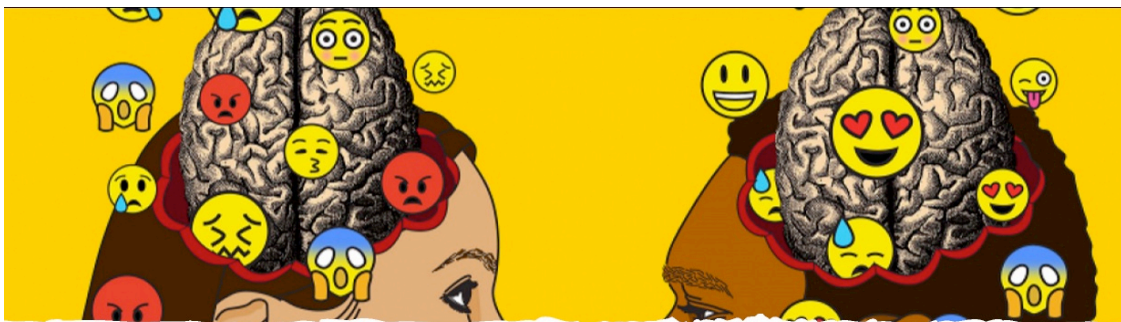
Teea also received a British Academy Rising Star Engagement Award for *Neuroscience in the playground: bringing together psychology, education and technology to investigate human curiosity*.

Rachael **Davis**, a PhD student of Michael **Thomas**, was awarded a 6-month fellowship by the Birkbeck Wellcome Trust Institutional Strategic Support Fund, which she started in March following submission of her PhD. The project is entitled 'Early behavioural predictors of autism'

IMPACT



Iroise **Dumontheil** and a team of PhD students (including Georgina Donati, Annie Brookman and Rosy Edey from Birkbeck) have been involved in the META project, led by Cardboard Citizens and funded by a Wellcome Trust Large Arts Awards. A piece of forum theatre about the teenage brain and teenage behaviour was written by playwright Sarah Woods, in collaboration with Iroise. The play was performed in front of 2,500 pupils in schools in Tower Hamlets, as well as in four performances to adult audiences. See a presentation by the actors here: <https://www.youtube.com/watch?list=PL933iMM6fGYKtb5IB8imtdEsaoRX7Emci&v=e0keo-CJPPU> and a review of the play here: <http://everything-theatre.co.uk/2016/03/meta-canada-water-culture-space-review.html>



Meta

IMPACT (CONTD)

Belinda **Brooks-Gordon** organized a talk and Q&A with Baroness Lynne Featherstone on her book *Equal Ever After*, detailing her governmental fight in favour of same sex marriage in the UK



Belinda **Brooks-Gordon** was BBC Radio 4 Woman's Hour interviewed by Jenni Murray on Women's Hour on safety zones for sex workers

<https://itunes.apple.com/gb/podcast/womans-hour/id130950322?mt=2>.

She was also interviewed on BBC Radio 4's Today Programme on sex research and policy.

The Centre for Educational Neuroscience, directed by Michael **Thomas**, went live with a new resource on its website entitled 'Neuro-hit or neuro-myth?', explaining the science (or lack thereof) behind some widespread misconceptions about the brain which have been adopted within educational contexts. The resource can be found here:

<http://tinyurl.com/z5pk9qe>

In March, Annette **Karmiloff-Smith** gave a series of non-academic talks entitled: *What affects the developing toddler's brain: the role of sleep, TV and tablets*, at the London Borough of Camden's Integrated Early Years Service conference, at the Nursery World Fair, Islington conference centre, debating afterwards with Early Years' practitioners, as well as at Twickenham's Early Years conference. In particular, she discussed the new research on toddlers' use of tablets that she is pursuing with Dr. Tim **Smith** at Birkbeck.

PUBLICATIONS

Ashworth, A., Hill, C., **Karmiloff-Smith**, A & Dimitriou, D. (in press). A cross-syndrome study of the differential effects of sleep on declarative memory consolidation in children with neurodevelopmental disorders. *Developmental Science*.

Barnes, J. (2016). Sure Start. In *Oxford Bibliographies in Childhood Studies*. Ed. H. Montgomery. New York: Oxford University Press.

Barnes, J & **Melhuish**, E. (2016). Amount and timing of group-based childcare from birth and cognitive development at 51 months: A UK study. *International Journal of Behavioral Development*, DOI: 10.1177/0165025416635756

Barnes, J. & Stuart, J. (2016). The feasibility of delivering Group Family Nurse Partnership. *Journal of Children's Services* (in press).

Bedford, R., **Jones**, E. H., **Johnson**, M. H., Pickles, A., Charman, T., & **Gliga**, T. (2016). Sex differences in the association between infant markers and later autistic traits. *Molecular Autism*.

Bolte, S., Bartl-Pokomy, K., Jonsson, U., Berggren, S., Zhang, D., Kostrzewa, E., Falck-Ytter, T., Einspieler, C., Pokomy, F., **Jones**, **E.J.H.**, Roeyers, H., Charman, T., & Marschik, P. (2015). How can clinicians detect and treat autism early? Methodological trends in early autism research. *Acta Paediatrica*, 105(2), 137-144.

Bolte, S., Tomalski, P., Marschik, P., Berggren, S., Norberg, J., Falck-Ytter, T., Pokorska, O., **Jones**, **E.J.H.**, Charman, T., Roeyers, H., & Kostrzewa, E. (online). Challenges and inequalities of opportunities in European psychiatry research: The example of psychodiagnostic tool availability in research on early autism identification. *European Journal of Psychological Assessment*.

Howard S., & **Melhuish**, E. (2016). An Early Years Toolbox (EYT) for Assessing Early Executive Function, Language, Self-Regulation, and Social Development: Validity, Reliability, and Preliminary Norms. *Journal of Psychoeducational Assessment*. DOI: 10.1177/0734282916633009

Howard, S. J., Powell, T., Vasseleu, E., Johnstone, S., & **Melhuish**, E. C. (2016). Enhancing Preschoolers' Executive Functions through Embedding Cognitive Activities in Shared Book Reading. Manuscript accepted for publication in *Educational Psychology Review*.

Jones, **E.J.H.**, Venema, K., Earl, R., Lowy, R., Barnes, K., Estes, A., Dawson, G., & Webb, S.J. (online). Reduced engagement with social stimuli in 6-month-old infants with later Autism Spectrum Disorder: A longitudinal prospective study of infants at high familial risk. *Journal of Neurodevelopmental Disorders*.

Karmiloff-Smith, A., Tamara Al-Janabi, Hana **D'Souza**, Jurgen Groet, Esha **Massand**, Kin Mok, Carla Startin, Elizabeth Fisher, John Hardy, Dean Nizetic, Victor Tybulewicz, and Andre Strydom: The importance of understanding individual differences in Down syndrome, *F1000* (2016).

PUBLICATIONS (CONT'D)

Kerrigan, L., **Thomas**, M. S. C., Bright, P., & Filippi, R. (2016). Evidence of an advantage in visuo-spatial memory for bilingual compared to monolingual speakers. *Bilingualism: Language and Cognition*. Published online: 11 February 2016. DOI:

<http://dx.doi.org/10.1017/S1366728915000917>

Leung, S., **Mareschal**, D., Rowsell, R., Simpson, D., Iaria, L., Grbic, A., & Kaufman, J. (2016) Oscillatory activity in the infant brain and the representation of small numbers. *Frontiers in Systems Neuroscience*; DOI: 10.3389/fnsys.2016.00004

Loth, E., Spooren, W., Ham, L., Isaacs, M., ... **Jones, E.J.H.**, ... & Linares-Garcia (2015). Towards a common understanding of biomarker approaches for Autism Spectrum Disorders between academia, industry and regulators. *Nature Reviews Drug Discovery*, 15(1), 70-73.

McEwen, F.S., Stewart, C. S., Colvert, E., Woodhouse, E., Curran, S., Gillan, N., Hallett, V., Lietz, S., Garnett, T., **Ronald**, A., Murphy, D., Happé, F. & Bolton, P. (2016). Diagnosing Autism Spectrum Disorder in Community Settings using the Development and Well-Being Assessment: Validation in a UK Population-Based Twin Sample. *Journal of Child Psychology and Psychiatry*, 57, 161-70.

Melhuish, E. (2016). Parents have the biggest influence over their child's language and emotional development. *The Conversation*, Manuscript accepted for publication March 8th, 2016.

Allman, M. J. & **Mareschal**, D. (2016) Possible evolutionary and developmental mechanisms of mental time travel. *Current Opinion in Behavioral Sciences*, 8, 220-225.

Melhuish, E. (2016). Provision of quality early childcare services: Synthesis Report. Brussels: European Commission.

Melhuish, E. (2016). Discussion Paper: Provision of quality early childcare services. Prepared for the Peer Review in Social Protection and Social Inclusion programme. Brussels: European Commission.

Melhuish, E. (2016). Hochwertige Betreuungsangebote für Kleinkinder. Kurzbericht, Tschechische Republik. Brussels: European Commission

Mermelshstine, R. & **Barnes**, J. (2016). Maternal responsive-didactic caregiving in play interactions with 10-month-olds and cognitive development at 18 months, *Infant and Child Development* (in press).

Miles A, McClements PL, Steele RJ, Redeker C, Sevdalis N, Wardle J. (2016) Perceived diagnostic delay and cancer-related distress: a cross sectional study of patients with colorectal cancer. *Psycho-oncology*. doi: 10.1002/pon.4093.

PUBLICATIONS (CONT'D)

Oaksford, M., & Chater, N. (2016). Probabilities, causation, and logic programming in conditional reasoning: A reply to Stenning and van Lambalgen. *Thinking and Reasoning*. (Online first)

Oaksford, M. (2016). Knowing enough to achieve your goals: Bayesian models and practical and theoretical rationality in conscious and unconscious inference. In L. Macchi, M. Bagassi, & R. Viale (Eds.). *Cognitive unconscious and human rationality* (pp. 99-118). Cambridge, Mass.: MIT Press.

Pinto, R., Rijdsdijk, F., **Ronald, A.**, Asherson, P. & Kuntsi, J. (2016). The Genetic Overlap of Attention-Deficit/Hyperactivity Disorder and Autistic-like Traits: an Investigation of Individual Symptom Scales and Cognitive markers. *Journal of Abnormal Child Psychology*, 44, 335-45.

Szaniecki, E. & **Barnes J.** (2016) Measurement Issues: Measures of infant mental health. *Child and Adolescent Mental Health*. 21(1), 64-74.

Smith, T. J. & Martin-Portugues Santacreu, J. Y. (in press) Match-Action: The role of motion and audio in creating global change blindness in film. *Media Psychology*

Thomas, M. S. C. (2016). Understanding delay in developmental disorders. *Child Development Perspectives*. Article first published online: 5 FEB 2016. DOI: 10.1111/cdep.12169

Thomas, M. S. C., Forrester, N. A. & **Ronald, A.** (2016). Multi-scale modeling of gene-behavior associations in an artificial neural network model of cognitive development. *Cognitive Science*, 40, 51-99.

Tick B, Colvert E, McEwen F, Stewart C, Woodhouse E, Gillan N, Hallett V, Lietz S, Garnett T, Simonoff E, **Ronald A**, Bolton P, Happé F, Rijdsdijk F. (2016). Autism spectrum disorders and other mental health problems: Exploring etiological overlaps and phenotypic causal associations. *Journal of the American Academy of Child and Adolescent Psychiatry*, 55, 106-113.

Tomalski, P., Derek G. Moore, Haiko Ballieux, Elena V. Kushnerenko, Mark H. **Johnson**, Annette **Karmiloff-Smith** (2016). Separating the effects of ethnicity and socio-economic status on sleep practices of 6- to 7-month-old infants. *Learning and Individual Differences*

Watson, S., Apicella F., Auyeung B., Beranova, S., Bonnet-Brilhault, F., Canal-Bedia R., ... **Jones, E.J.H.**, ... & Yirmiya, N. (online). Attitudes of the autism community to early autism research. *Autism*

INVITED TALKS

Denis **Mareschal** gave a talk entitled: *Combining Multiple Perceptual Spatial Cues for Action* at iCOG 2016 in London.

Mike Oaksford gave an invited seminar talk entitled *On the source of human irrationality* at City, University of London, 3rd February 2016.

Claire **Press** gave a departmental seminar at City University, London, on *Mapping between action and perception: Domain-specificity of mechanisms and implications for autism*.

V. Smith & F. **Tasker** presented a poster on *Understanding chemsex trends amongst gay men living in London* at Public Health England conference 'Improving the Health and wellbeing of Lesbian, Gay, Bisexual and Trans People and Communities', London UK, 14 January 2016.

Jonathan A **Smith** gave invited presentations on interpretative phenomenological analysis (IPA) to faculty and doctoral students in Stockholm University and University of Verona (March 2016).

Annette **Karmiloff-Smith** gave a talk in Spanish on children's notational systems at the Festschrift in honour of Professor L. Tolchinsky-Landsmann at the University of Barcelona, Spain. She also gave an invited talk on *Regression in typical development and in autism spectrum disorders*, at the NIMH, Bethesda, Washington, USA.

Jacqueline **Barnes** gave an invited talk on February 24th 2016 on *Child care: Use, outcomes and issues with a particular focus on the UK Families, Children and Child Care study*. Mayer-Brown International LLB Family Network lunchtime seminar, London. She also gave a talk on March 15th 2016. on *UK Early Childhood Education and Care; research and policy* to PhD programme in Educational Sciences for Teacher Education, Faculty of Education and International Studies Oslo and Akershus University College of Applied Sciences (HiOA), Oslo, Norway.

INVITED TALKS (CONTD)

Ted **Melhuish** presented invited evidence on Early Years Indicators of School Readiness to an Inquiry convened by The Children's Commissioner on February 25th, 2016 .

Ted **Melhuish** gave evidence to a ministerial briefing with Minister for Children, Sam Gyimah, On March 1st 2016.

Ted **Melhuish** gave a keynote address on The Development of Literacy, and long-term consequences To the National Summit on Early Literacy, March 7th, 2016, Canberra, Australia.

Mark **Johnson** delivered a lecture "Early life interventions with e-technology" at the Wellcome Trust/MQ meeting on Improving children and young people's mental health through research and policy, London, on the Feb 4th; he also talked on "Attentional control training for infants at risk of ADHD" at the MQ Mental Health conference, London, Feb 5th; and gave the Zangwill Club seminar in Cambridge UK on March 4th on: "The typical and atypical development of the social brain".

Tim **Smith** presented at the Developmental Lunch, University of North Carolina-Chapel Hill, USA (30/03/16), workshop on Autism at McGill University, Montreal, Canada (10/02/16), and Institute of Education, UK (21/01/16).

WIPS...TIPS LECTURE SERIES



On 3rd March, the department hosted the first of **the WIPS Lecture Series -**

Women in Psychological Sciences -

to showcase women as role models and to discuss diversity/equality issues.

Virginia Valian from New York gave a truly inspiring lecture “Why still so slow?”

Based on her book “Why So Slow – the advancement of women”.

While the talk attracted a good female turnout from several Birkbeck departments, very few males attended...perhaps because of the series title. So the series will be renamed:

The TIPS Lecture Series

Trailblazers in Psychological Sciences,

still mainly showcasing women scientists, but also with the occasional male trailblazer...

The next two TIPS Lectures will be given by

Prof. Dorothy Bishop, Oxford (8/11/16) & by Prof. Uta Frith, UCL (7/3/17).



Belinda **Brooks-Gordon** hosted Professor Dame Athene Donald For the UN International Womens’ Day, who spoke on ‘Facilitating Successful Women’



UPCOMING TALKS/COLLOQUIA/VISITORS



You are warmly invited to attend the New Frontiers of Family seminar at Birkbeck's Clore Management Centre on 20th April 2016 (10:30-5pm) entitled "Beyond the nuclear family: Conceiving of a non-nuclear family". This free event has been organized by Birkbeck's Dr. Fiona Tasker (Department of Psychological Sciences) and is part of a nationwide series of seminars sponsored by the British Psychological Society, on the psychological implications of new family forms (organized by Dr. Naomi Moller (OU) Prof. Victoria Clarke (UWE) , Dr. Nikki Hayfield (UWE) and Dr. Fiona Tasker).

At the Birkbeck event on the 20th April four invited speakers will be looking at how family possibilities are widened by new reproductive technologies (such as surrogacy and gamete donation), adoption, LGBTQ-parenting, the creation of families of choice, and media representations of family. Dr Pedro Costa (Honorary Research Associate at Birkbeck, University of London/ ISPA Lisbon, Portugal) will be speaking on "Risk and resilience in planned lesbian and gay families". For further details and to register a place at the seminar, please see:

<http://www.open.ac.uk/ccig/events/beyond-the-non-nuclear-family-non-nuclear-family-planning>

UPCOMING TALKS/COLLOQUIA

CBCD COLLOQUIA SERIES

APRIL 5TH, 4-5 p.m,

DR. MARIEKE JEPMA

University of Groningen, Netherlands

Noradrenergic regulation of exploration and learning in dynamic environments

**APRIL 27th 1-2 p.m. PROFESSOR GISELA KAPLAN,
University of New England and Queensland Brain Institute,
Australia.**

Babbling in birds - a case of convergent evolution? A comparative approach.

**MAY 3RD 4-5 p.m. PROFESSOR MARY RUTHERFORD
St. Thomas Hospital, London**

Imaging the foetal brain in Down syndrome

COGNITIVE COLLOQUIA SERIES

These will resume in the Autumn

NEW ON-LINE RESEARCH

**Perception lab on-line study: Tracking the migraine cycle:
Everyone is welcome to participate whether you do, or do
not, get migraine**

<http://www.bbk.ac.uk/psychology/e/xp/88/1>

SOCIAL NEWS

The Dept. of Psych Sciences isn't just about brain imaging, Reaction Time, and questionnaires. We have lots of fun too!

Declan Clear & Jenny Glennon, both from Ireland, helped CBCD to celebrate St. Patrick's Day, 17th March:



Natasha Kirkham, Denis Mareschal & Mark Johnson getting in the mood...